



CAPITAL GROUP
PROPERTIES



7 CONTINENTAL BOULEVARD | MERRIMACK, NH

MERRIMACK VILLAGE CENTER

1,200 - 6,392 SF AVAILABLE

PROJECT DETAILS

MERRIMACK VILLAGE CENTER · 1,200 - 6,392 SF AVAILABLE · Retail / Restaurant

PROPERTY HIGHLIGHTS

- Small shop space for lease
- Join Shaw's Supermarket, New Hampshire Liquor & Wine Outlet, McDonald's, Supercuts & Subway
- 1,200 - 6,392 SF Available
- Total GLA 84,453 SF
- Traffic Counts: Everett Turnpike 68,000 ADT & Continental Blvd 12,902 ADT
- Pylon Signage Available
- Excellent visibility from Everett Turnpike

DEMOGRAPHICS

TOTAL POPULATION

3 MILES	7 MILES	10 MILES
18,649	65,274	144,320

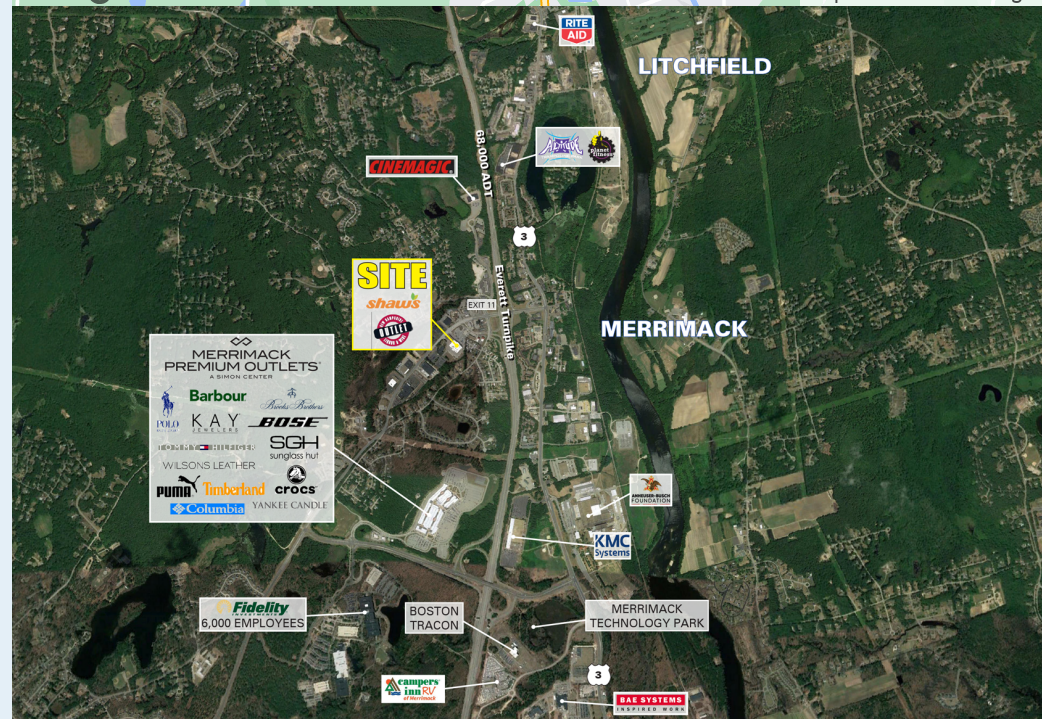
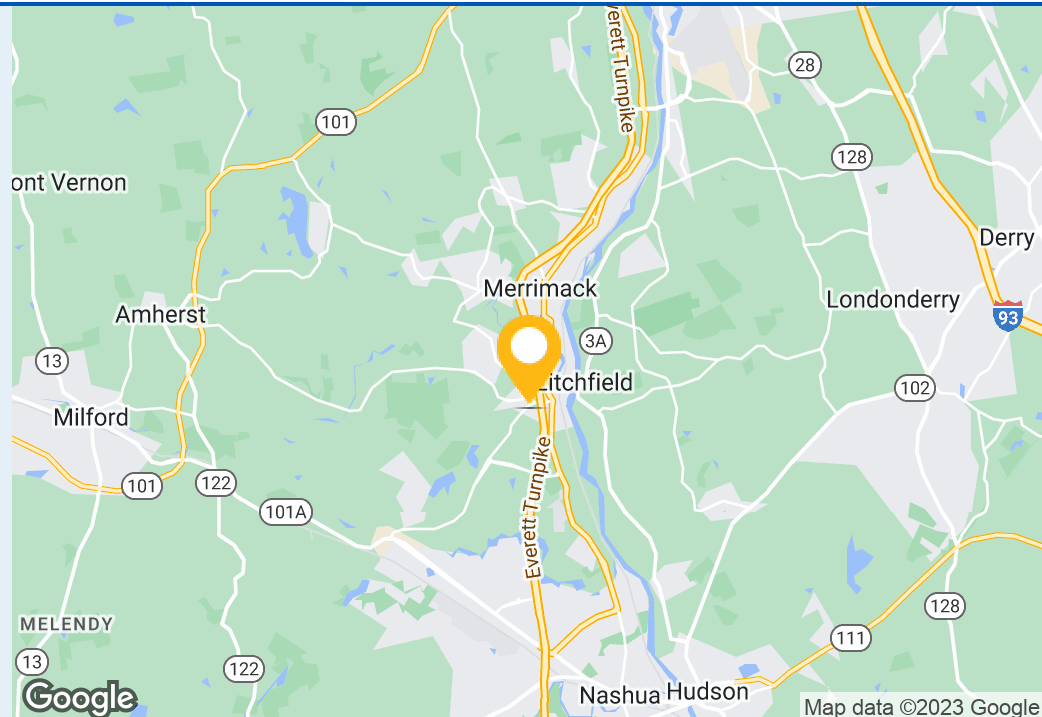
MEDIAN HH INCOME

3 MILES	7 MILES	10 MILES
\$102,156	\$100,922	\$88,469

AVAILABILITY

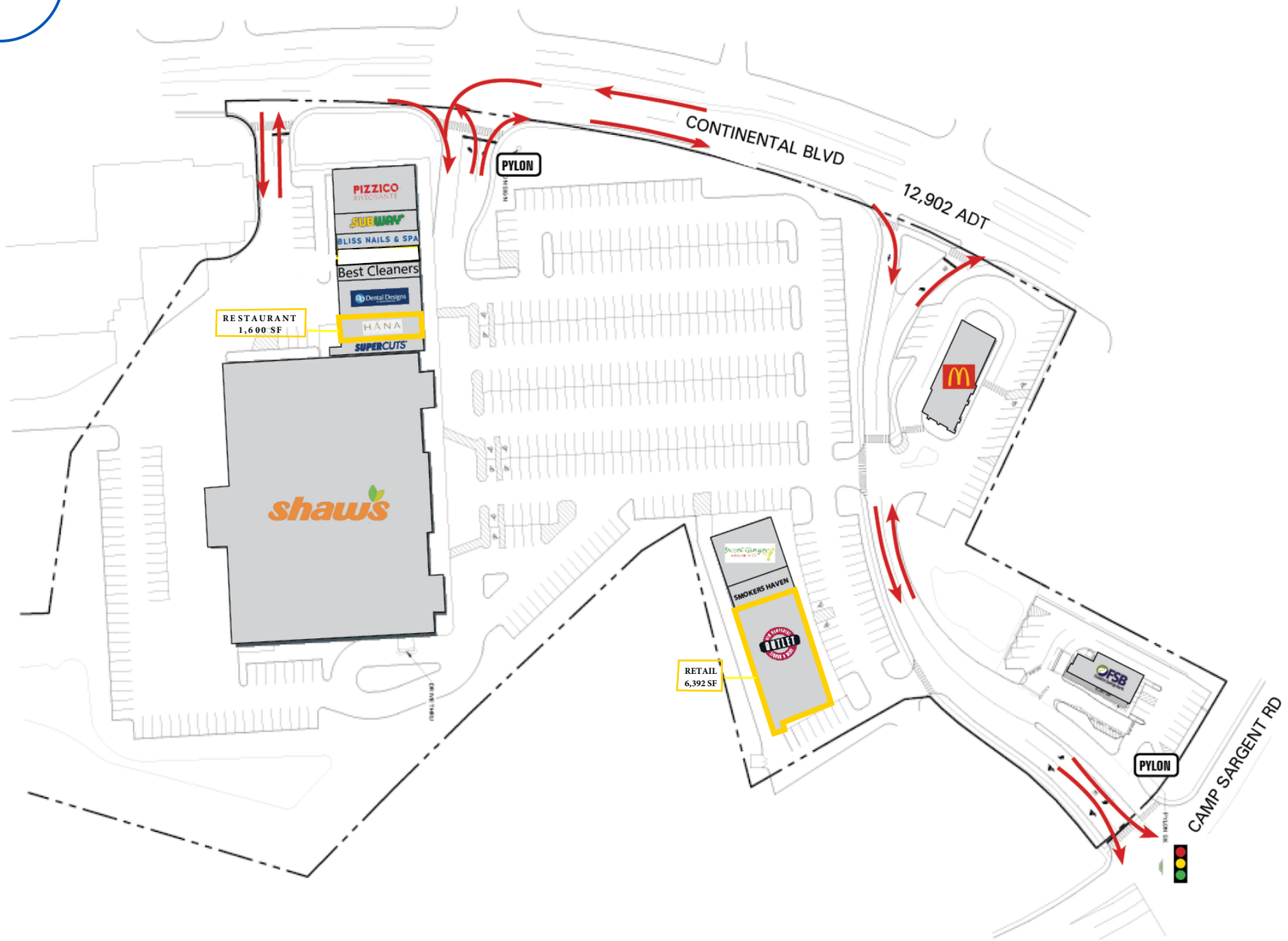
Suite: 105-1,600 SF (Restaurant)

101- 6,392 SF (Subdividable)



SITE PLAN

MERRIMACK VILLAGE CENTER · 1,200 - 6,392 SF AVAILABLE · Retail / Restaurant



EXTERIOR

MERRIMACK VILLAGE CENTER · 1,200 - 6,392 SF AVAILABLE · Retail / Restaurant

1,200 SF
AVAILABLE



7 CONTINENTAL BOULEVARD | MERRIMACK, NH

MERRIMACK VILLAGE CENTER

1,200 - 6,392 SF AVAILABLE | RETAIL

JAMES VAZZA
508.229.1824

LEASINGMGR@CGPLLC.NET

SAMUEL BARTOES
508.229.1813

LEASING2@CGPLLC.NET



CAPITAL GROUP
PROPERTIES

259 TURNPIKE ROAD, SUITE 100
SOUTHBOROUGH, MA 01772

WWW.CAPITALGROUPPROPERTIES.COM

CINEMAGIC

68,000 ADT

3

Everett Turnpike

EXIT 11



MERRIMACK PREMIUM OUTLETSSM
A SIMON CENTER

Fidelity
6,000 EMPLOYEES

BOSTON TRACON

