

GENERAL NOTES:

- PRIME ALL SURFACES TO BE PAINTED AND PROVIDE TWO FINISH COATS LOW OR ZERO V.O.C., INTERIOR FINISH PAINT, COLOR APPROVED BY OWNER.
- RELOCATION OF ELECTRICAL, PLUMBING AND HVAC FOR THE INSTALLATION OF NEW CONSTRUCTION, FIXTURES, AND FINISHES TO BE THE RESPONSIBILITY OF THE CONTRACTOR.
- EMERGENCY LIGHTING TO BE PROVIDED IN ACCORDANCE WITH NFPA 101, ALONG THE PATH OF EGRESS INCLUDING TO A PUBLIC WAY AT THE EXTERIOR OF THE BUILDING.
- EMERGENCY EGRESS PATH TO BE INDICATED WITH SIGNAGE IN ACCORDANCE WITH NFPA 101.
- DIMENSIONS ARE FROM CENTER OF STUD WALL FOR INTERIOR PARTITIONS UNLESS DISPLAYED FROM FINISH FACE OF EXISTING.
- CONSULT MECHANICAL CONTRACTOR FOR RELOCATION OF SUPPLY AND RETURN DUCTWORK AS NECESSARY.
- CLEAN AND TEST MECHANICAL EQUIPMENT AND AIR HANDLERS. REPLACE FILTERS IN ALL AIR HANDLERS.
- INSPECT ELECTRICAL WIRING THROUGHOUT AND REPAIR OR REPLACE AS NECESSARY.
- WHERE POWER/TEL/DATA IS LOCATED BENEATH WORK SURFACE, PROVIDE GROMMET IN COUNTER SURFACE FOR CABLES.
- EXTEND NEW HALL PARTITIONS TO STRUCTURE ABOVE.
- SUBMIT SHOP DRAWINGS OF ALL MILLWORK FOR OWNER REVIEW PRIOR TO FABRICATION.
- COORDINATE OUTLET LOCATIONS WITH OWNER.

CONSTRUCTION KEYNOTES:

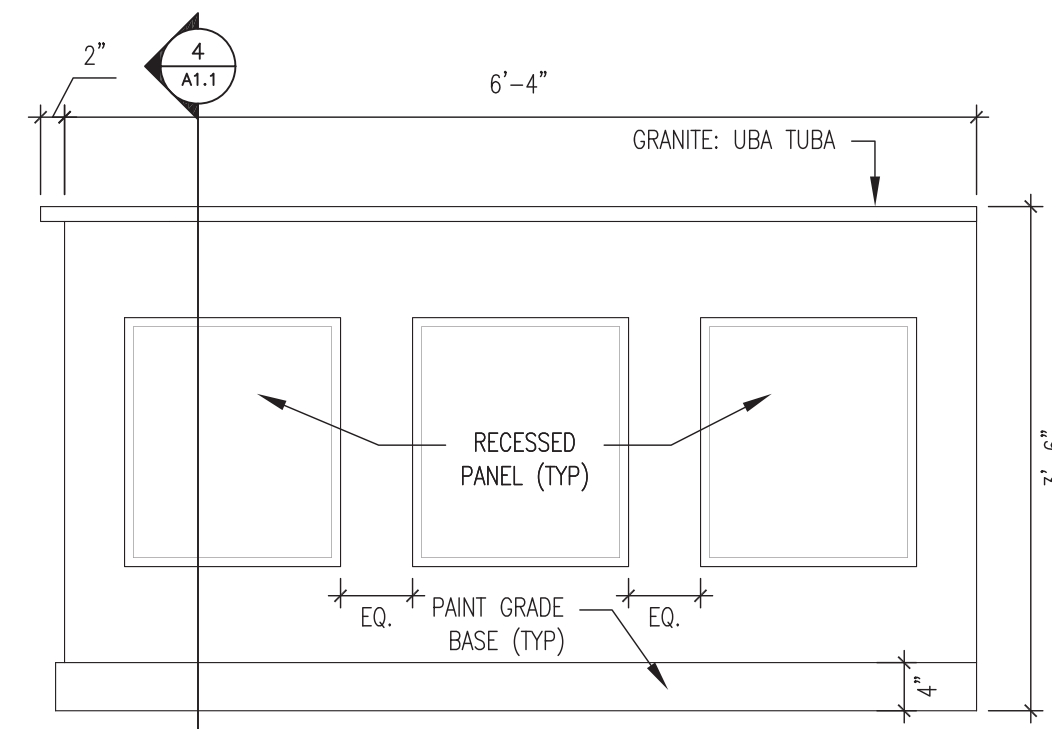
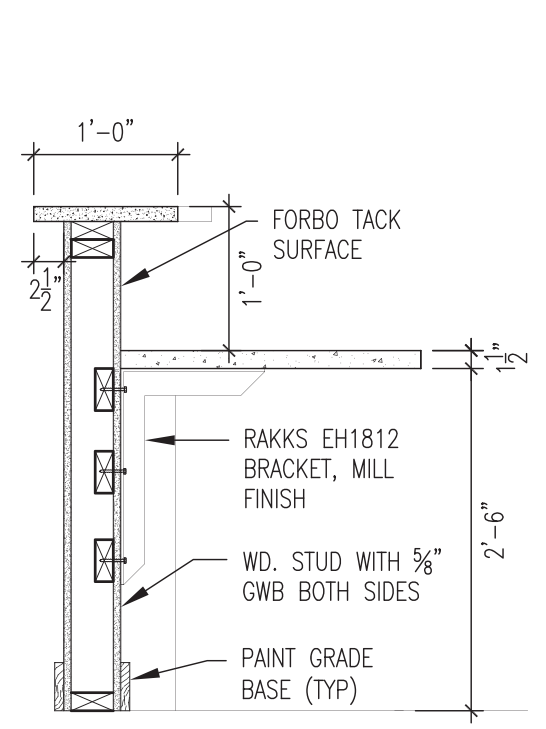
- INFILL EXISTING OPENING TO CREATE ROUGH OPENING FOR NEW DOOR AND FRAME.
- INSTALL NEW DOOR AND FRAME TO MATCH EXISTING.
- CONSTRUCT AND INSTALL RECEPTION DESK. FINISHES TO BE CHOSEN BY OWNER.

Wall Type Schedule SCALE: 1" = 1'

LOCATION	TYPE	PARTITION	DESCRIPTION
TYP. 2x4 W.D. STUD INTERIOR WALL TYPE	1	16" O.C.	- 2x4 MTL. STUD 16" O.C. - ONE LAYER 5/8" TYPE X GWB EACH SIDE - ACOUSTICAL BATT INSULATION

Door Schedule

LOCATION	NO.	DOOR				FRAME		HARDWARE SET NO.	NOTES
		WIDTH	HEIGHT	THICK.	MATL. TYPE	MATL. TYPE			
UNIT	204								MATCH EXISTING
	208								MATCH EXISTING
	209								MATCH EXISTING
	214								MATCH EXISTING



4 RECEPTION DESK DETAIL 3/4" = 1'-0"

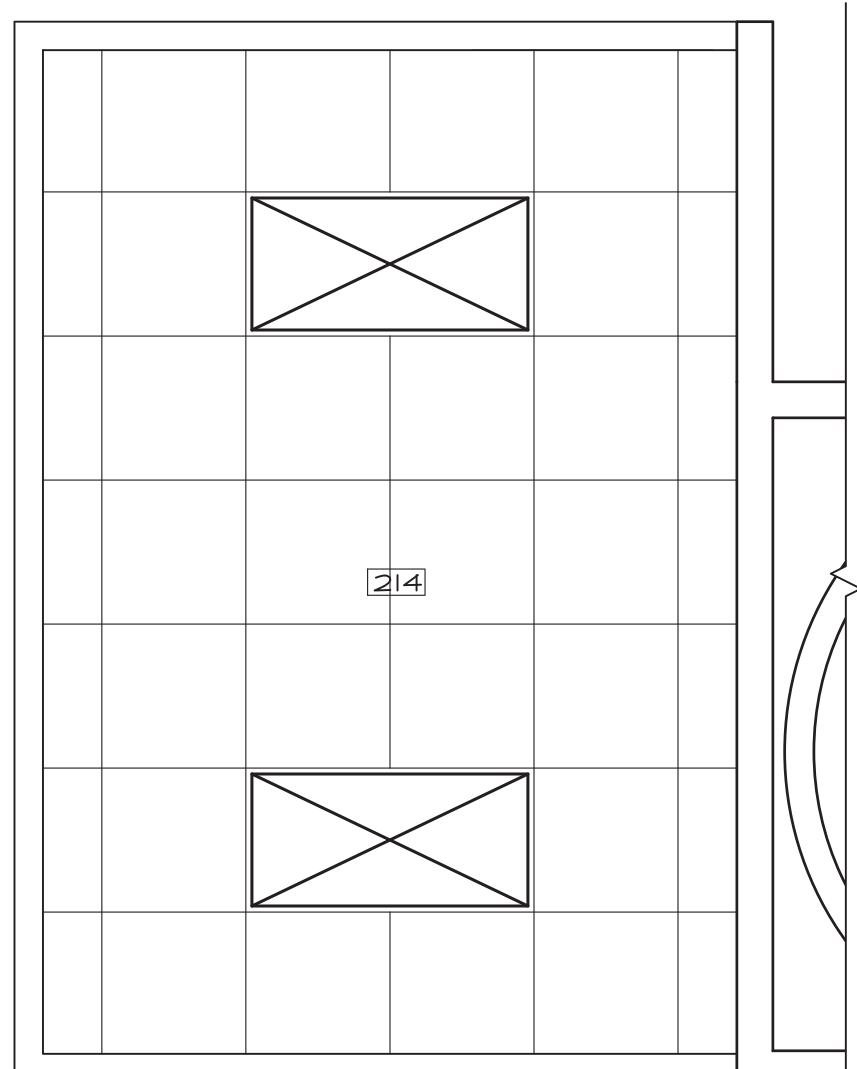
3 RECEPTION DESK ELEVATION 3/4" = 1'-0"

LIGHTING LEGEND:

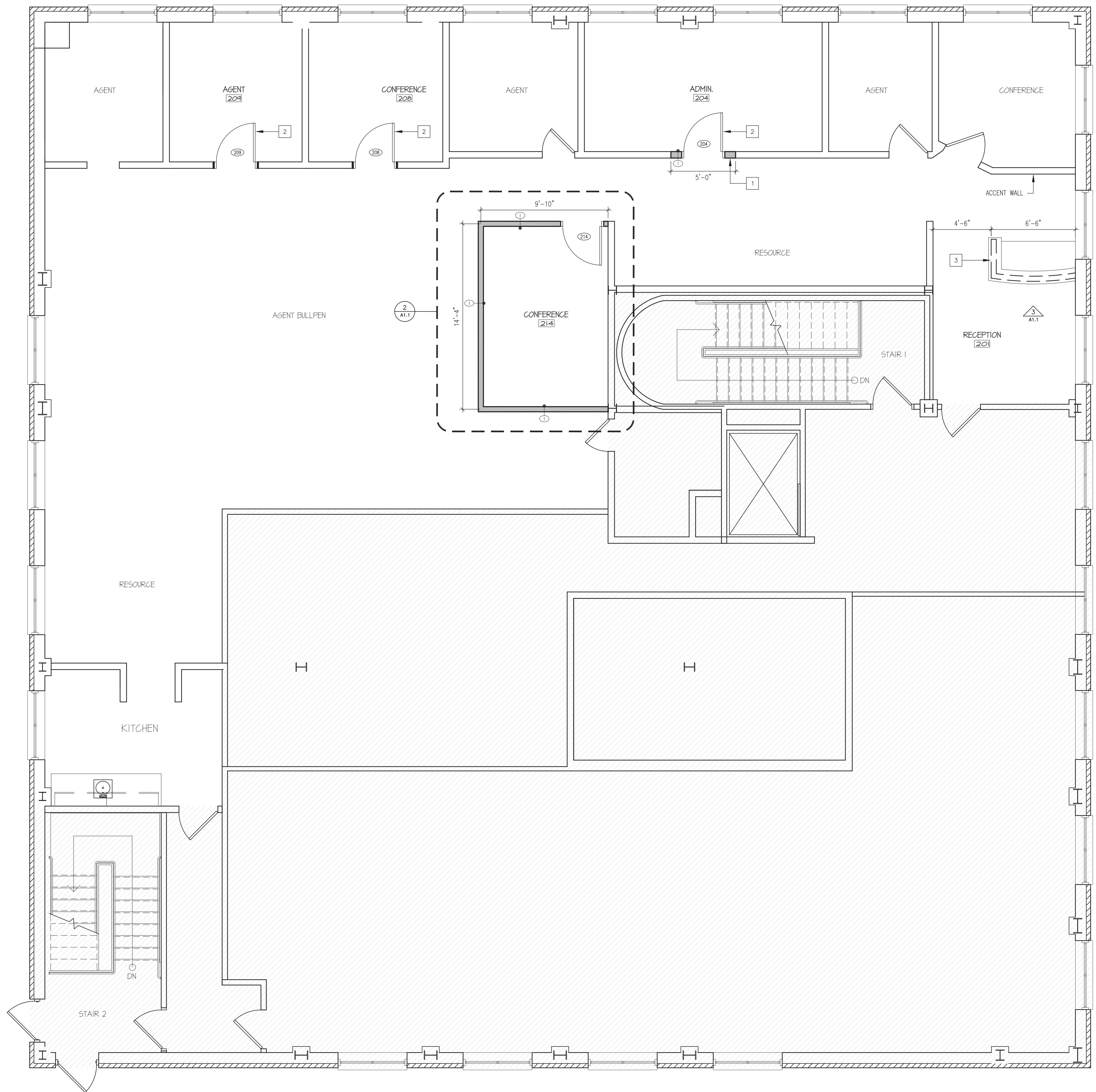
- EXISTING TROFFER LUMINAIRE RELOCATED

GENERAL NOTES:

- ADJUST EXISTING CEILING GRID TO ACCOMMODATE NEW INTERIOR WALL PARTITIONS.
- ADJUST AUTOMATIC SPRINKLER SYSTEM HEADS, HVAC REGISTERS, AND OTHER MISCELLANEOUS FIXTURES TO ACCOMMODATE NEW OFFICE SPACES, LIGHTING, DOORS, ETC.



2 PARTIAL REFL. CEILING PLAN 3/8" = 1'-0"



1 UNIT FLOOR PLAN 1/4" = 1'-0"

Copyright
 Architectural
PORT ONE ARCHITECTS
 959 Islington Street
 Portsmouth, NH 03801
 603.436.8891
 info@portonearchitects.com
 COPYRIGHT © 2016 BY PORT ONE ARCHITECTS, INC.
 NO REUSE WITHOUT PERMISSION

Structural

Fire Protection

Plumbing

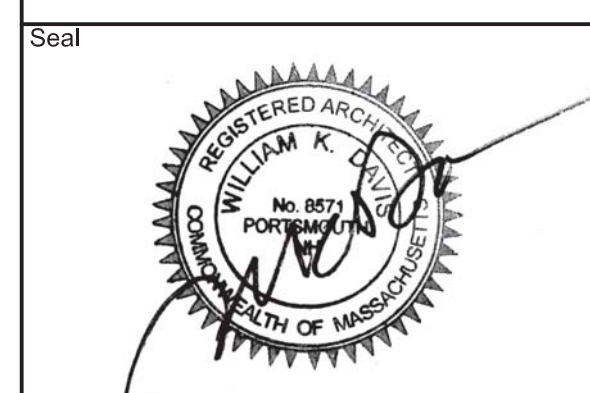
HVAC

Electrical

Seal

Date

Description



Rev. No.

Project

Date

Scale

Drawn By: EM

Reviewed By: WD

Sheet Contents

UNIT FLOOR PLAN AND DETAILS

Sheet No.

A1.1

COLDWELL BANKER NORTHBOROUGH, MA

INTERIOR ALTERATIONS

CONSTRUCTION DOCUMENTS

Project No. 16-010

Date FEB. 1, 2016

Scale As Noted

Drawn By: EM

Reviewed By: WD

Sheet Contents

UNIT FLOOR PLAN AND DETAILS

Sheet No.

A1.1