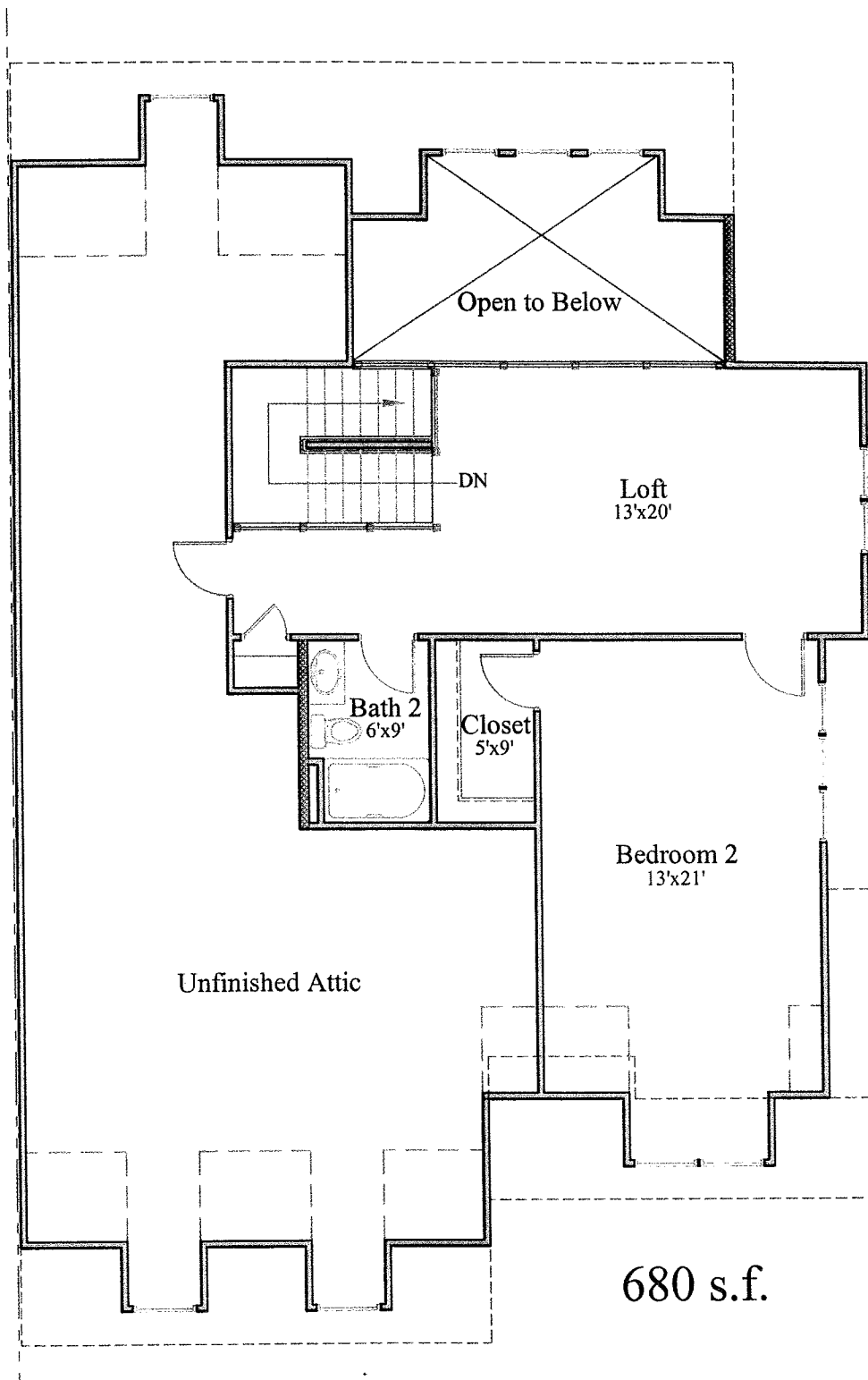


1560 s.f.

Seller may change home plans without prior notice or obligation. Square footage and dimensions are approximate. Model homes may contain items not included as standard features. Floor plans and illustrations are artists' conceptions and are not intended to show specific detailing. Sales representatives are available to provide more information about specific homes, locations, option details, pricing, and specifications.

	COPYRIGHT	PROJECT NAME	DRAWING DATA	DRAWING TITLE / NUMBER
GORMAN RICHARDSON ARCHITECTS, INC. 77 MAIN STREET HOPKINTON, MA 01748 508.497.2590 FAX 508.435.0072	<small>© COPYRIGHT 2008 ALL DRAWN AND WRITTEN INFORMATION APPEARING HEREIN IS AND SHALL REMAIN THE PROPERTY OF GORMAN RICHARDSON ARCHITECTS, INC. AND NO REUSE SHALL BE DUPLICATED IN ANY FORM, DISCLOSED OR OTHERWISE USED WITHOUT THE EXPRESS WRITTEN CONSENT OF GORMAN RICHARDSON ARCHITECTS, INC.</small>	GROUSE HILL AT SUDBURY OLD FRAMINGHAM ROAD SUDBURY, MASSACHUSETTS	Scale : 1/8" = 1'-0" Drawn By : VEE Checked By : CPR File Name : UNITA_E1-1dwg	ARLINGTON FLOOR PLANS FIRST FLOOR
Client: Capital Group Properties 259 Turnpike Road Southborough, MA 01772	Date : 8/1/2007	Project Number : 2005019.01	A-F.1	



Seller may change home plans without prior notice or obligation. Square footage and dimensions are approximate. Model homes may contain items not included as standard features. Floor plans and illustrations are artists' conceptions and are not intended to show specific detailing. Sales representatives are available to provide more information about specific homes, locations, option details, pricing, and specifications.

	COPYRIGHT	PROJECT NAME	DRAWING DATA	DRAWING TITLE / NUMBER
GORMAN RICHARDSON ARCHITECTS, INC. 77 MAIN STREET HOPKINTON, MA 01748 508.497.2590 FAX 508.435.0072	<small>© COPYRIGHT 2008 ALL DRAWN AND WRITTEN INFORMATION APPEARING HEREIN IS AND SHALL REMAIN THE PROPERTY OF GORMAN RICHARDSON ARCHITECTS, INC. AND AS SUCH SHALL NOT BE DUPLICATED IN ANY FORM, DISCLOSED OR OTHERWISE USED WITHOUT THE EXPRESS WRITTEN CONSENT OF GORMAN RICHARDSON ARCHITECTS, INC.</small>	GROUSE HILL AT SUDBURY OLD FRAMINGHAM ROAD SUDBURY, MASSACHUSETTS	Scale : 1/8" = 1'-0" Drawn By : VEE Checked By : CPR File Name : UNITA_E1-1dwg	ARLINGTON FLOOR PLANS SECOND FLOOR
Client: Capital Group Properties 259 Turnpike Road Southborough, MA 01772	Date : 12/11/2007	Project Number : 2005019.01		A-F.2